

# ***ProjectWare Dashboard***

## ***Rapid Process Automation***



Copyright DSAPPS INC

*\* Patent Pending*

# *Contents*

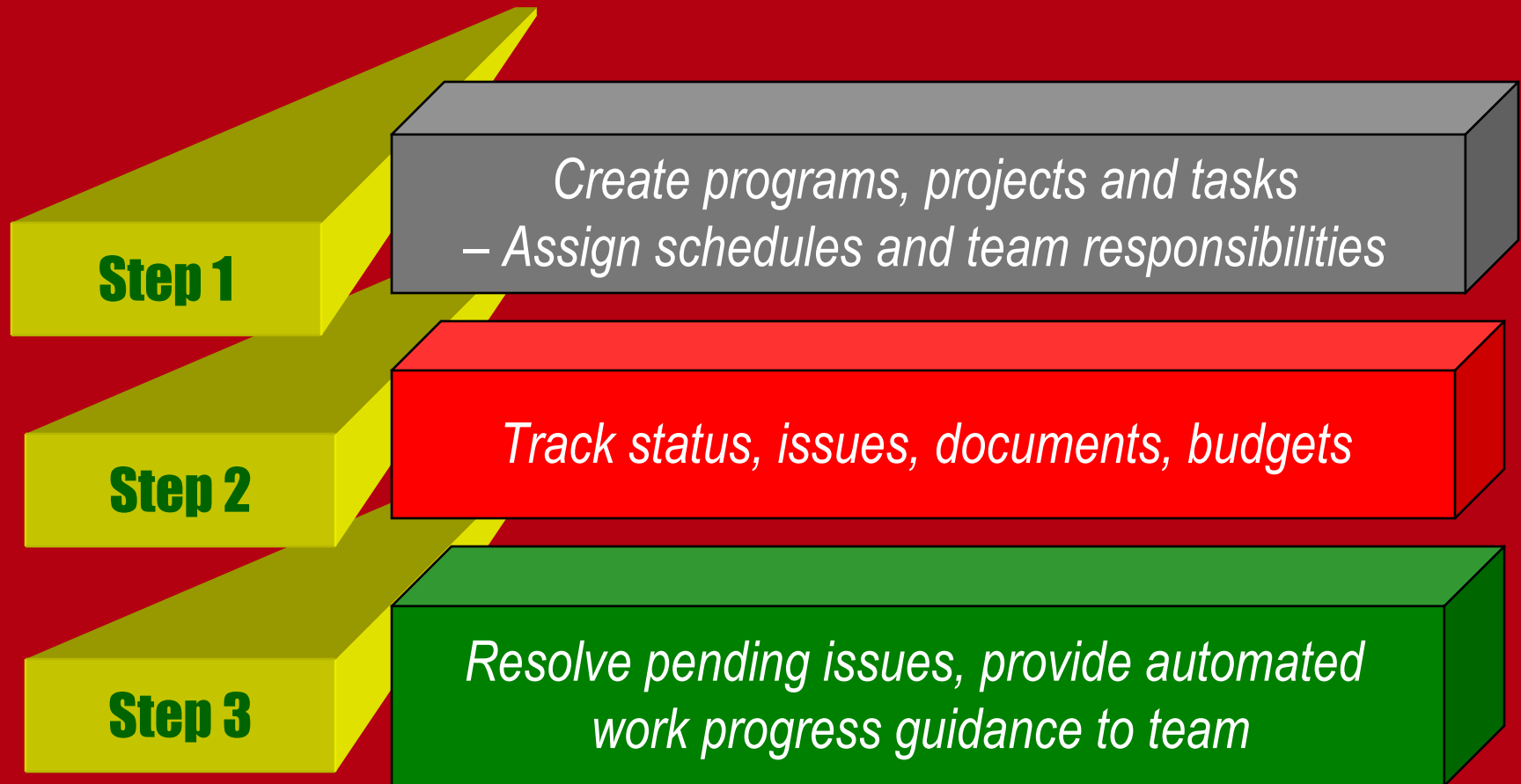
- *Introduction*
- *Selecting Application*
- *Creating programs, projects, tasks*
- *Tracking status with dashboards*
- *Updating documents, issues, cost/time budgets and actuals*
- *Rapid customization support for process automation*

# ***Introduction***

- *PROJECTWARE DASHBOARD is a cloud based software tool for Collaborative Project Management, Team & Tasks Scheduling, Documents Management, Issue Management, Cost and Time Management.*
- *Patent pending innovative support for Rapid Process Automation – map, customize and deploy processes without need for expert programming*



# *ProjectWare Dashboard Workflow*



# *Sample Applications*

ProjectWare Dashboard - Select Application

Project Management

Agile Development

Customer Management

Asset Management

Service Management

Interview Management

*Business users without programming skills may RAPIDLY map and deploy any custom process for automation*

# Create programs, projects, tasks

Project Management - Create Tasks

[Status Dashboard](#)   [Calendar Dashboard](#)   [Change Password](#)   [Logout](#)

Tasks  
Launch solar panels study

Start Date (default today)  
2011-10-19

Due Date  
2011-10-31

From:  
info101@projectware.com

To:  
seshr@projectware.com

cc:

[Email Team \(optional\)](#)

Priority       Status % Complete

Select Program and Project

Program

Project

[\(or Create New Program or Project\)](#)

Program	Project	Tasks
<a href="#">solar</a>	<a href="#">install panels</a>	<a href="#">Obtain budget for study</a>
<a href="#">solar</a>	<a href="#">install panels</a>	<a href="#">hire consultant</a>
<a href="#">solar</a>	<a href="#">install panels</a>	<a href="#">task123</a>
<a href="#">Wind Generation</a>	<a href="#">Feasibility Study</a>	<a href="#">Interview consultants</a>
<a href="#">solar</a>	<a href="#">install panels</a>	<a href="#">test install</a>

# Status & Calendar Dashboards

Project Management - Status Dashboard

[Print Page](#)
[Create New Tasks](#)
[Calendar Dashboard](#)
[Documents Dashboard](#)
[Issues Dashboard](#)
[Change Password](#)
[Logout](#)

[Create New Program or New Project](#)
[Select New Application](#)
[Help](#)

Program 
 Project 
 From  To 
[Add Filters](#)
[Remove Filters](#)

Project	Tasks	Status	Role	Due Date	% Complete	Priority	Hours	Costs
<a href="#">install panels</a>	<a href="#">Obtain budget for study</a>	<b>Late overdue</b>	Created	Oct 25, 2011	60%	Normal	<u>0</u>	<u>0</u>
<a href="#">install panels</a>	<a href="#">hire consultant</a>	<b>Completed</b>	Created	Nov 4, 2011	100%	Normal	<u>0</u>	<u>0</u>
<a href="#">install panels</a>	<a href="#">task123</a>	<b>On track</b>	Created	Nov 18, 2011	25%	Normal	<u>0</u>	<u>0</u>
<a href="#">install panels</a>	<a href="#">test install</a>	<b>Slow/Open Issues</b>	Created	Dec 5, 2011	0% (Should be over 20%)	Normal	<u>0</u>	<u>0</u>

Project Management - Calendar Dashboard

[Print Page](#)
[Create New Tasks](#)
[Status Dashboard](#)
[Documents Dashboard](#)
[Issues Dashboard](#)
[Change Password](#)
[Logout](#)

[Create New Program or New Project](#)
[Select New Application](#)

Program 
 Project

Previous Month		Next Month			November 2011		Previous Year		Next Year	
Sunday	Monday	Tuesday	Wednesday	Thursday	Friday	Saturday				
		1	2	3	4 <a href="#">hire consultant</a>	5*				
6	7	8	9	10	11	12				
13	14	15	16	17	18 <a href="#">task123</a>	19				
20	21	22	23	24 <a href="#">interview consultants</a>	25	26				
27	28	29	30							

# Update schedules, cost/time budgets

ProjectWare Dashboard - Update Action Slow require over 8%

[Status Dashboard](#) [Calendar Dashboard](#) [Change Password](#) [Logout](#)

Action  
Launch solar panels study

Start Date  
2011-10-19

Due Date  
2011-10-31

From:  
info101@projectware.com

To:  
seshr@projectware.com

cc:

Priority  Status % Complete   
Budget Hours  Budget Costs

Issues Pending  [Update Issues](#) [Documents](#) [Hours](#) [Costs](#)

Program   
Project

Project Management - Costs for Tasks:Launch solar panels study

[Edit Tasks](#) [Status Dashboard](#) [Calendar Dashboard](#)

Step 1 - Add Item Costs

Item   
Costs Amount   
Date

Step 2 - Review Item Costs for this Action (click to select and update)

Step 3 - Update/Delete Item and Costs

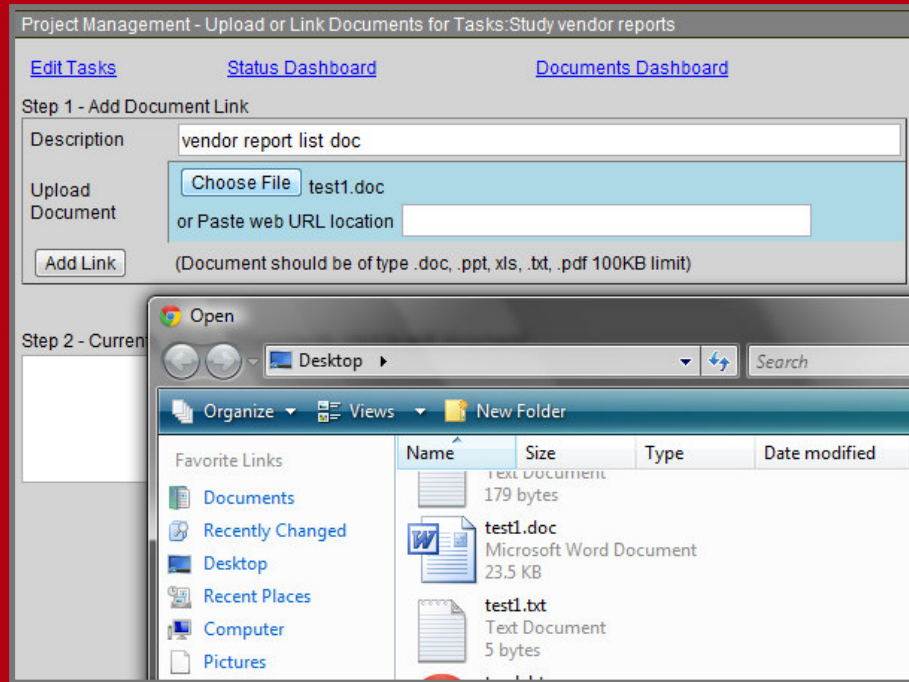
Item   
Costs

*Track costs and resource hours,  
flag budget overruns*

Hours	Costs
0	300
8	0
2	100



# Track all project documents



*Saves time spent on emailing and lost/outdated documents*

Project Management - Documents Dashboard

Print Page   Create New Tasks   Status Dashboard   Calendar Dashboard   Issues Dashboard   Change Password   Logout

[Create New Program or New Project](#)   [Select New Application](#)

Program: solar   Project: install panels

<a href="#">Document - click to open</a>	<a href="#">Action - click to review document</a>	Status	Due Date	Project
<a href="#">Feasibility document proposal</a>	<a href="#">Obtain budget for study</a>	<span style="color: red;">●</span> <b>Late overdue</b>	Oct 25, 2011	<a href="#">install panels</a>
<a href="#">Hiring proposal and analysis</a>	<a href="#">hire consultant</a>	<span style="color: green;">●</span> <b>Completed</b>	Nov 4, 2011	<a href="#">install panels</a>
<a href="#">Install plan instructions</a>	<a href="#">test install</a>	<span style="color: yellow;">●</span> <b>On track/Open Issues</b>	Dec 5, 2011	<a href="#">install panels</a>

# Tracking and Managing Issues

Project Management - Issues for Tasks:test install

[Edit Tasks](#)   [Status Dashboard](#)   [Issues Dashboard](#)

Add New Issue:

Open issues

delay in setting appt

Resolved issues

Update Issue:   
Check if Issue Resolved

Resolving pending issues across programs, projects and tasks

Project Management - Issues Dashboard


[Create New Program or New Project](#)   [Select New Application](#)







Program:    Project:

Issue	Tasks	Action Status	Due Date	Issue Status	Project
<a href="#">Delay in getting license</a>	<a href="#">Site Study</a>	<b>Late overdue</b>	Oct 15, 2011	pending	<a href="#">Install Solar Panels</a>
<a href="#">Missing report</a>	<a href="#">Study vendor reports</a>	<b>Slow/Open Issues</b>	Nov 3, 2011	pending	<a href="#">Install Solar Panels</a>

# *Proactive work-guidance*

*Tracking work status and providing continual guidance to team on required work progress*

<u>Tasks</u>	<u>Status</u>	<u>Role</u>	<u>Due Date</u>	<u>% Complete</u>
<a href="#">Obtain budget for study</a>	 <a href="#">Late overdue</a>	Created	Oct 25, 2011	60%
<a href="#">hire consultant</a>	 <a href="#">Completed</a>	Created	Nov 4, 2011	100%
<a href="#">task123</a>	 <a href="#">Slow</a>	Created	Nov 18, 2011	0% (Should be over 5%)
<a href="#">Interview consultants</a>	 <a href="#">On track</a>	Created	Nov 24, 2011	0%
<a href="#">test install</a>	 <a href="#">Slow/Open Issues</a>	Created	Dec 5, 2011	0% (Should be over 15%)

<u>Status</u>	<u>% Complete</u>
 <a href="#">Late overdue</a>	30%
 <a href="#">Slow progress</a>	45% (Should be over 80%)
 <a href="#">On track</a>	25%
 <a href="#">Has Issues</a>	0%
 <a href="#">On track</a>	20%
 <a href="#">Slow progress</a>	0% (Should be over 5%)

Smart analysis of work progress, alerts if slow progress

# *Supports Rapid Process Automation*

Sample Application	Program Level	Project Level	Action level
<b>Project Management</b> - Manages multi-programs and multi-projects within programs and project tasks.	Program	Project	Task
<b>Customer Management</b> - Manages project managing multiple customers, multiple customer projects and project tasks.	Customer	Project	Task
<b>Agile Product Development</b> - Manages multiple product feature backlogs, multiple sprint backlogs under each and multiple tasks in each sprint.	Product Backlog	Sprint Backlog	Task
<b>Asset Management</b> - Manage multiple asset categories, multiple assets under each and actions performed for each asset.	Asset Category	Asset	Action
<b>Job Interview Management</b> - Manages multiple job positions, multiple persons interviewed for each position and actions to perform.	Job Position	Person	Action
<b>Service Management</b> - Manages service calls for multiple products and actions to be performed in each service call. -	Product	Service Call	Action

Customize and automate business processes by mapping process terminology

# *Unique Product Features*

## ■ Collaborative team support

- Cloud based tool, collaborate within and outside the enterprise with team members, partners, customers, vendors etc.
- Simple user interface , easy to learn, deploy and scale

## ■ Comprehensive support for managing all project plans, progress and resources

- Manages programs, projects, tasks, action commitments, scheduled project dates, work progress, project documents, issues, cost and time budgets/actuals.

## ■ Proactive status tracking and management

- Status and calendar dashboards tracking status on work progress and cost/time expenditures.
- Document dashboard listing all project related documents.
- Issue dashboard listing pending and resolved issues.

## ■ Proactive work-guidance, keeps team on track on work-progress

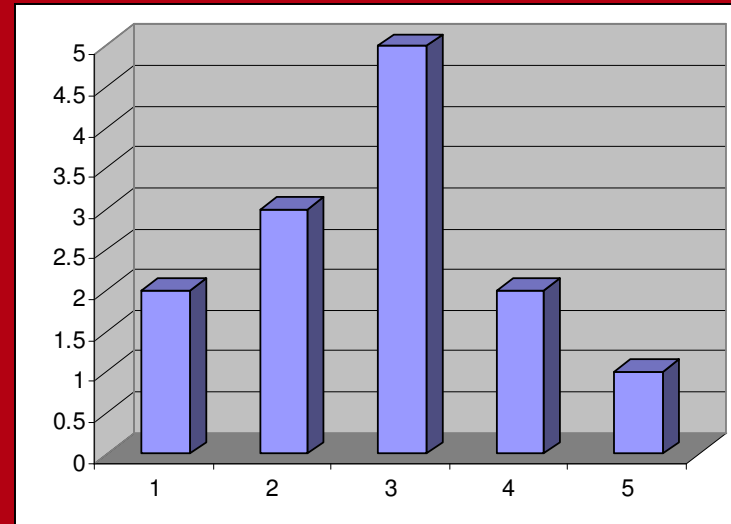
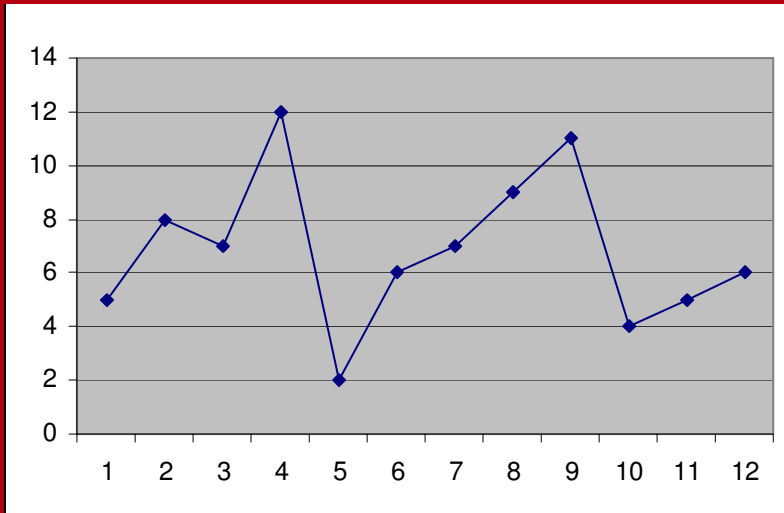
- Continually computes and informs team members on required work-progress to keep plans on schedule

## ■ Extensible and customizable

- Supports Rapid Process Automation, users may customize and deploy tool to automate most common business processes by mapping process terminology. Does not require any programming knowledge.

# ***Future Releases***

- 1) Improved workflow process templates editing support*
- 2) Support for Project Analytics*



# *ProjectWare Dashboard*

[www.projectware.com](http://www.projectware.com)

*Established 1994, located in California Silicon Valley*

*Extensive experience with Fortune 100 companies  
implementing and deploying collaborative project and  
process automation applications*